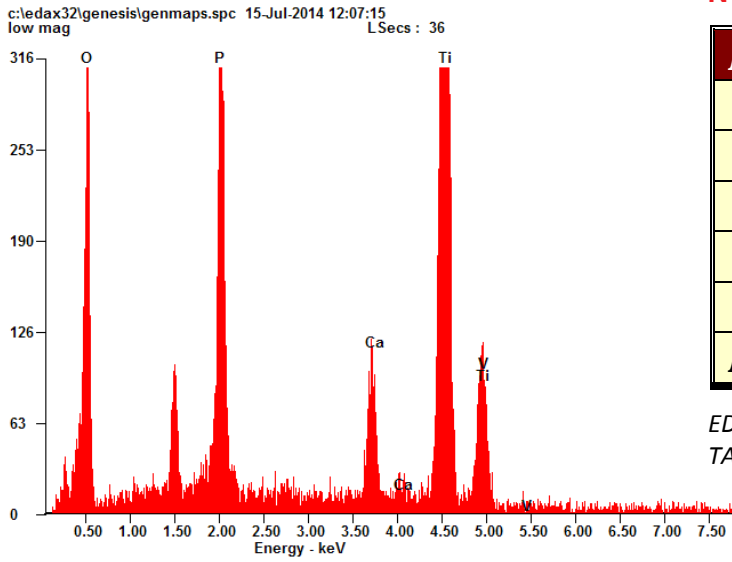


## Microanalysis Report

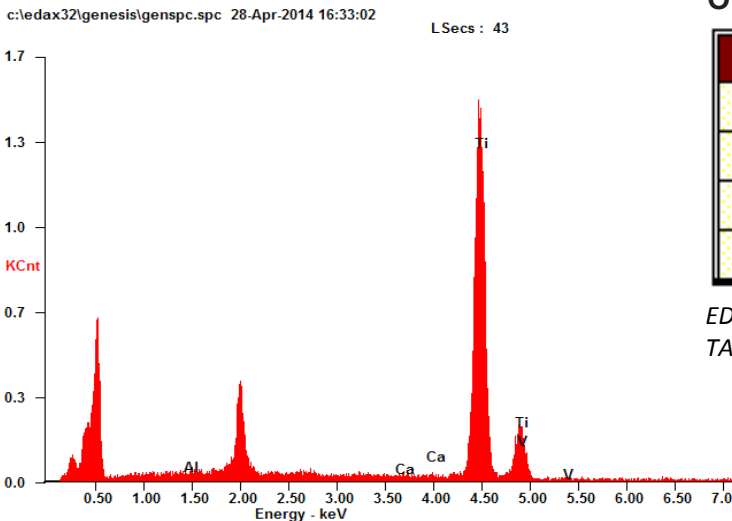


KV:20.00 TILT:0.00 TAKE-OFF:35.00 AMPT:25.6 DETECTOR TYPE :SUTW-SAPPHIRE RESOLUTION :133.63

### NOVA PSI IMPLANT

Element	Wt%	At%
<i>OK</i>	46.36	69.77
<i>PK</i>	10.58	08.23
<i>CaK</i>	04.11	02.47
<i>TiK</i>	37.69	18.94
<i>VK</i>	01.25	00.59
<i>Matrix</i>	Correction	ZAF

EDAX ZAF QUANTIFICATION STANDARDLESS SEC  
TABLE : DEFAULT



KV:20.00 TILT:0.00 TAKE-OFF:35.00 AMPT:25.6 DETECTOR TYPE :SUTW-SAPPHIRE RESOLUTION :133.63

### OTHER IMPLANT

Element	Wt %	At %
<i>AlK</i>	01.00	01.76
<i>CaK</i>	00.45	00.53
<i>TiK</i>	98.55	97.71
<i>VK</i>	00.00	00.00

EDAX ZAF QUANTIFICATION STANDARDLESS SEC  
TABLE : DEFAULT

**6Al4V Titanium: Calcium Phosphate incorporated into the porous structure during the processing.**

